



# **Setup Guide**

## **ACE 1.6**

**Support websites:**

**<http://www.wildcardonline.nl/>**

**<http://forums.raidersmerciless.com/>**

Copyright © 2008

## Legal Notes

Individuals or organizations may utilize the information in this document for the sole purpose of evaluation and guidance.

No part of this document may be reproduced or transmitted in any form or by any means electronic, mechanical or otherwise, including photocopying and recording, for any purpose, without written permission by the ACE Support Crew.

The information contained in this document is provided "AS IS" without any warranty of any kind. Unless otherwise expressly agreed in writing, the ACE Support Crew makes no warranty as to the value or accuracy of information contained herein. The document could include technical inaccuracies or typographical errors. Changes are periodically added to the information herein. Therefore the ACE Support Crew reserves the right, without prior notice, to make any change or improvement in the specifications data and information herein, at any time.

**THE ACE SUPPORT CREW HEREBY DISCLAIMS ALL WARRANTIES AND CONDITIONS WITH REGARD TO THE INFORMATION CONTAINED HEREIN, INCLUDING ALL IMPLIED WARRANTIES OF MERCHANTABILITY, FITNESS FOR A PARTICULAR PURPOSE, TITLE AND NON- INFRINGEMENT. IN NO EVENT SHALL THE ACE SUPPORT CREW BE LIABLE, WHETHER IN CONTRACT, TORT OR OTHERWISE, FOR ANY INDIRECT, SPECIAL OR CONSEQUENTIAL DAMAGES OR ANY DAMAGES WHATSOEVER INCLUDING BUT NOT LIMITED TO DAMAGES RESULTING FROM LOSS OF USE, DATA, PROFITS, REVENUES, OR CUSTOMERS, ARISING OUT OF OR IN CONNECTION WITH THE USE OR PERFORMANCE OF INFORMATION CONTAINED IN THIS DOCUMENT.**

Call of Duty ® is a registered trademark of Activision.

Microsoft ® is a registered trademark of Microsoft Corporation.

WinRAR ® is a registered trademark of Alexander Roshal.

Other product and company names mentioned herein are trademarks of their respective owners.

## Table of Contents

Legal Notes	I
Table of Contents	II
<b>1 About this Guide</b>	<b>1</b>
1.1 Intended Audience	1
1.2 Comments and Suggestions	1
<b>2 About ACE</b>	<b>2</b>
2.1 Features	2
2.2 Supported Game Types	3
2.3 Compatibility	3
2.4 Support	3
2.5 Donations	4
2.6 The ACE Support Crew	4
2.7 Special Thanks	4
<b>3 Preliminary Requirements</b>	<b>5</b>
3.1 Game Support	5
3.2 Hardware	5
3.3 Operating Systems	5
3.4 Software	5
<b>4 Basic Understanding</b>	<b>6</b>
4.1 Before we Begin	6
4.2 ACE package	6
4.3 The fs_game folder	6
4.4 IWD files	7
4.5 ff files	7
<b>5 Installing ACE on Windows</b>	<b>8</b>
5.1 Game Installation	8
5.2 Creating the Mod Folder	8
5.3 Setup	9
5.4 Startup Shortcut	9
5.5 Advanced Startup Shortcut	10
<b>6 Installing ACE on Linux</b>	<b>11</b>
6.1 Game Installation	11
6.2 Creating the Mod Folder	11
6.3 Setup	12
6.4 Using SCREEN for startup	12
6.5 Startup Shortcut	12

6.6	Advanced Startup Shortcut	13
6.7	Stop Shortcut	14
6.8	Status Shortcut	14
7	Basic Configuration	15
7.1	Configuration Files	15
7.2	Basic Server Settings	15
7.2.1	Public Server Information	15
7.2.2	Network Settings	16
7.2.3	Password Settings	16
7.2.4	Player Slots	16
7.2.5	Download Redirection	17
7.3	Adding Custom Maps	17
8	Making a Custom Clan Logo	18
9	Troubleshooting	24
A	Version History	25
B	Credits	29

## **1 About This Guide**

### **1.1 Intended Audience**

This manual is intended for everybody who wants to set up an ACE enabled Call of Duty 4 game server.

### **1.2 Comments and Suggestions**

For comments and suggestions, or more information about the ACE modification for Call of Duty 4, please visit the forums on these websites:

<http://www.wildcardonline.nl/>

<http://forums.raidersmerciless.com/>

## 2 About ACE

### ACE stands for “Additional Combat Effects”

The ACE Mod is created by Wildcard perhaps better known as Marc on the several forums he is active on.

ACE is a Modern Warfare continuation of the WW2X Mod for Call of Duty 2 which has a World War II environment.

WW2X on its turn was a continuation of the Extreme+ Mod where Wildcard was a head coder of for a long period of time, after he left the eXtreme+ Mod he continued on his own with the new name WW2X.

Like most, if not ALL bigger and great mods out there, like AWE4, X4, WW2X, eXtreme.... the real origin of all these mods started with AWE for Call of Duty.

AWE was created by a great coder named Bell and till this date his code is still vastly used and apparent in today's mods.

ACE has a small but nevertheless loyal users group, and they help to make this mod better and even more exciting with every single release.

We hope you enjoy playing it as much as we enjoy making and maintaining it.

### 2.1 Features

An extensive but still incomplete list of exiting features in ACE:

- Add server to favourites menu button
- Body search
- Extended obituaries
- Nade dropping
- Name checker
- Zeroy's NightMod
- Map rotate if empty
- Admin punishment control
- No enemyfiring compass-blip
- Head shot announcement
- Anti camping with several punishments
- Clan Hud Image logo
- Firstaid system
- Option to set sv\_fps to 20, 25 or 30
- Grenade indicators on or off
- Redcrosshairs on or off
- Deathicons on or off
- 5 Endgame Mapvote
- Ambient fx control
- UAV, airstrike, chopper killstreak control
- Pain and Death sounds
- Unknown soldier/ Unnamed Player Handling
- Random map rotation
- Bodysink
- Weap drop on arm/handhit, trip on leg/foot hit
- First blood announcement
- Health pack drop/pickup
- Clan text logo
- Working bots for testing
- Player bleeding
- Weapon damage modifiers
- Crosshairs on or off
- Enemy names on or off
- Mantlehints on or off

- Objective pointers on or off
- Hiticon on or off + additional settings
- Jump height modifier
- Healthbar
- Option to turn on or off turrets
- Invisible spawn
- Welcome messages
- Rangefinder
- Live stats
- Minimap in hardcore on or off
- Falldamage modifiers
- Prematch movement on or off
- Redone health-regen
- Spawnprotection
- Vote menu delay/limiter
- Server messages
- Laserdot
- Snipe TDM Spawns

## 2.2 Supported Game Types

ACE currently supports the following game types:

Game	Type	Description
DM	Stock	DeathMatch
DOM	Stock	Domination
KOTH	Stock	King of the Hill
SAB	Stock	Sabotage
SD	Stock	Search & Destroy
WAR	Stock	Team DeathMatch
CTF	Custom	Capture The Flag
CTFB	Custom	Capture The Flag Back
HTF	Custom	Hold The Flag

## 2.3 Compatibility

Full compatibility on Call of Duty 4 stock game types, and custom game types prepared for the ACE mod. Not all game types supported by the ACE mod are supported by custom maps, and vice versa.

## 2.4 Support

For more information about the ACE mod for Call of Duty 4 please visit us at:

<http://www.wildcardonline.nl/>

<http://forums.raidersmerciless.com/>

## 2.5 Donations

If you think this mod has brought new life into your Call of Duty 4 server and you got a few bucks to spare, visit the support websites for information on how to donate.

## 2.6 The ACE Support Crew

### Wildcard



## 2.7 Special Thanks

The ACE Support Crew would like to take this opportunity to thank all the users of the ACE mod, without all of you, we would not have a reason for doing this and would not be having as much fun as we are.

Thanks to Mike Nomad and Wizard220 for providing not only a mirror hosting site, but specially for providing a one stop place where everyone can get the knowledge and information they need and where truth and mutual respect is the highest priority.

### 3 Preliminary Requirements

#### 3.1 Game Support

The ACE modification is for Call of Duty 4 only.

#### 3.2 Hardware

There are no special requirements to run ACE on your Call of Duty 4 server. For the server there are two simple rules: faster is better, and more memory is better. For comparison: a simple, 10 player home server runs perfectly fine on a Pentium III 700Mhz or comparable AMD with 512MB of memory installed.

#### 3.3 Operating Systems

The ACE mod runs on both Windows and Linux (same package).

#### 3.4 Software

Obviously you need Call of Duty 4. Version 1.4 and above are supported. If you want to whole works, update to Call of Duty 4 1.5. Get the latest patch here:

For Linux: <http://treefort.icculus.org/cod/>

For Windows: <http://files.clanwarz.net/cod4-server/update/>

Get the latest version of the ACE mod.

<http://www.wildcardonline.nl/>

<http://forums.raidersmerciless.com/>



*This guide is based on ACE version 1.6.*

*Visit the support websites regularly to see if new versions or patches are available for download. A newer guide will be included.*

Install a copy of WinRAR or PakScape.

<http://www.rarlab.com>

<http://www.google.com/search?q=pakscape&meta=>

## 4 Basic Understanding

### 4.1 Before we Begin

If you want or need to start with a fresh installation of Call of Duty 4, at least patch it to version 1.4 or better before proceeding. If you are using an existing installation, remove ALL existing custom maps and mods first, including older versions of ACE.

If you want to upgrade an existing CoD4 public server (people can already access your server and play games), you should make a backup copy of the existing CoD4 server configuration file. You can use valuable information herein for the configuration of the ACE enabled server. Your server configuration file's name can be pretty much anything. If you don't use mods now, it is located in the main folder, and probably has a name like *server.cfg*, *dedicated.cfg*, or *codserver.cfg*.



*Do NOT overwrite the ACE master configuration file (codserver.cfg) with the one you already have*

### 4.2 ACE Package

If you not already did so, download the latest version of ACE from the support websites.

To access the ACE Download Section, you need to register first.

One of the sticky (top) threads in the download section of the forum will contain download links for the latest packages. Select the package for the desired setup. The ACE versions are one package for both Windows and Linux.

### 4.3 The fs\_game folder

To avoid problems, the original game files in the main folder, and the files from the mod need to be strictly separated. To instruct the server part of Call of Duty to include a mod folder, a parameter called *fs\_game* is added to the command line, hence the name "*fs\_game* folder". Another name for *fs\_game* folder is mod folder. Simply put, it is the folder where you install mods, and for ACE we make no exception.



*From now on we refer to the fs\_game folder as the "mod folder".*

#### 4.4 IWD files

If you take a closer look at the content of the main folder in the Call of Duty installation folder, you see a lot of IWD files. The ACE mod has also IWD files.

When starting the server, the executable will first read all stock IWD files in the main folder, followed by the files in the mod folder. The mod folder is processed by first reading all extracted content (more about that later), followed by all IWD files in alphabetical order.

The server creates a virtual file system from all the folders and files it finds during its launch. Existing files in the virtual file system can be overwritten by files that are read later. In fact, this is the principle of creating a mod: overwriting stock files with modified ones, adding files, and finally script it all together to make it work.

IWD files are in fact regular ZIP files. You can open, inspect and extract IWD files with all popular compression tools.

To customize ACE for your server or clan, you have to do some IWD editing. There is no way around that, but on the other hand, there is no need to panic. If you have a copy of WinRAR installed, it's as easy as changing underwear.

#### 4.5 ff files

With the introduction of Call of Duty 4 there are also new files that are essential to make the game and therefore the mod work, these are the so called fast files.

Unfortunately for all who want to edit the mod more deeply to fit their needs, this is no longer possible as there is no way to properly open up these ff files. All localized strings that normally could be edited by opening up an IWD with WinRAR are now enclosed in ff file format.

The only way now to deeply edit the mod or localized strings is if the mod creator makes the needed files available in RAW format....after which the user can recompile them again in ff file format using the COD4 mod tools.

The COD4 mod tools can be downloaded from here:

<http://www.media.iwnation.com/COD4/>

An update to 1.1 is also been released and can be found here:

[http://patches.infinityward.com/modernwarfare/patch/cod4mw\\_modtools\\_v1.1\\_update.zip](http://patches.infinityward.com/modernwarfare/patch/cod4mw_modtools_v1.1_update.zip)

This guide does not provide a tutorial on how to use them, plenty to be found on the internet and ofcourse on the official COD4 websites.

The benefit of the ff files is not only that the game loads much faster, but also that the mods and scripts developed are somewhat protected against unauthorized copying.

## 5 Installing ACE on Windows

This chapter will describe the installation process on Windows only. If you want to install ACE on Linux, see the next chapter.



*Make notes during the installation process. It's good practice to log all changes made. In case of trouble, this way it's easy to revert back to a working configuration, and it's extremely valuable during upgrades.*

### 5.1 Game Installation

Install Call of Duty 4. Download and apply the 1.4 patch for Windows.  
A description of how to install the game is beyond the scope of this guide.

### 5.2 Creating the Mod Folder

In your servers COD4 installation folder, typically

C:\Program Files\Activision\Call of Duty 4 - Modern Warfare\

That is where the mods folder is located, in this folder create a new directory. This will be your mod folder (AKA fs\_game folder).

Try to avoid obvious folder names, like ace, fs\_game, or mod. Be creative, but keep it short and simple.

The entire path to you mod folder would now be:

C:\Program Files\Activision\Call of Duty 4 - Modern Warfare\mods\ace12

Where ace12 is your created mod folder (ofcourse you can change ace12 to whatever name you want).



*Do NOT create the mod folder IN the main folder, but in the mods folder.  
Do NOT use spaces or special characters in the folder's name. To be on the safe side stick to the alphabet, numbers and the underscore.  
In our examples we use ace12 as the mod folder.*

### 5.3 Setup

Unzip the package (ACE-Mod1.6.zip) to an empty temporary folder. In the newly created folder you just extracted you see 2 other zip files..these contain mod.ff files. One of them will enable the red hit blips you will see on the minimap....the other doesn't. Extract the one you want, then copy and paste the mod.ff file, z\_ace1.6.iwd, and ALL the cfg files to your mod folder.

### 5.4 Startup Shortcut

Create a shortcut to iw3mp.exe on your desktop, and right-click the shortcut's icon to open its properties. Typical path for iw3mp.exe is:

C:\Program Files\Activision\Call of Duty 4 - Modern Warfare\iw3mp.exe

In the target field insert a quote (") in front and behind the call to iw3mp.exe, if not already there. Like this:

"C:\Program Files\Activision\Call of Duty 4 - Modern Warfare\iw3mp.exe"

Add the following parameters to the command line:

+set fs\_game mods/ace12 +set dedicated 2 +exec codserver.cfg +set sv\_punkbuster 1  
+map\_rotate



*In the examples, the command line could span two or three lines. This is due to page limitations. All command lines are ONE line.  
Remember that ace12 is our example mod folder name. Replace ace12 with the name you came up with in step 5.2.*

So your command line looks like this:

"C:\Program Files\Activision\Call of Duty 4 - Modern Warfare\iw3mp.exe" +set  
fs\_game mods/ace12 +set dedicated 2 +exec codserver.cfg +set sv\_punkbuster 1 +map\_rotate

## 5.5 Advanced Startup Shortcut

You can add several optional parameters to the start file:

```
+set net_ip 1.2.3.4
```

Defines the IP address the server binds to.

```
+set net_port 28960
```

Defines the port the server listens to.

```
"C:\Program Files\Activision\Call of Duty 4 - Modern Warfare\iw3mp.exe" +set  
fs_game mods ace12 +set dedicated 2 +set net_ip 1.2.3.4 +set net_port 28960 +exec  
codserver.cfg +set sv_punkbuster 1 +map_rotate
```



*The IP address 1.2.3.4 should be replaced by the one your server is using. For a LAN server or a public server behind a NAT router, this could be e.g. 10.0.0.1, or 192.168.1.1. For a true public server, use the public IP address.  
Port 28960 is the default port. If you don't specify it, the server will listen to that port automatically. You can change it if you like.*



*The feature that adds the "Add this server to your favorites" entry to the in-game menu requires that net\_ip is set. If you don't set it on the command line, the server will be referenced as "localhost", which is not very useful for a link to an external host.*

You can now continue with the chapter 'Basic Configuration', and start to configure the server and the ACE mod.

## 6 Installing ACE on Linux

This chapter will describe the installation process on Linux only. If you want to install ACE on Windows, see the previous chapter.



*Make notes during the installation process. It's good practice to log all changes made. In case of trouble, this way it's easy to revert back to a working configuration, and it's extremely valuable during upgrades.*

### 6.1 Game Installation

Install Call of Duty 4. Download and apply the 1.4 patch for Windows.  
A description of how to install the game is beyond the scope of this guide.

### 6.2 Creating the Mod Folder

In your servers COD4 installation folder, typically

C:\Program Files\Activision\Call of Duty 4 - Modern Warfare\

That is where the mods folder is located, in this folder create a new directory. This will be your mod folder (AKA fs\_game folder).

Try to avoid obvious folder names, like ace, fs\_game, or mod. Be creative, but keep it short and simple.

The entire path to you mod folder would now be:

C:\Program Files\Activision\Call of Duty 4 - Modern Warfare\mods\ace12

Where ace12 is your created mod folder (ofcourse you can change ace12 to whatever name you want).



*Do NOT create the mod folder IN the main folder, but in the mods folder.  
Do NOT use spaces or special characters in the folder's name. To be on the safe side stick to the alphabet, numbers and the underscore.  
In our examples we use ace12 as the mod folder.*

### 6.3 Setup

Unzip the package (ACE-Mod1.6.zip) to an empty temporary folder. In the newly created folder you just extracted you see 2 other zip files..these contain mod.ff files. One of them will enable the red hit blips you will see on the minimap....the other doesn't. Extract the one you want, then copy and paste the mod.ff file, z\_ace1.6.iwd, and ALL the cfg files to your mod folder.

### 6.4 Using Screen for Startup

To make a screen named "CodServer":

```
screen -A -m -d -S CodServer ./cod4_lnxdded +set ttycon 0 +set fs_game mods/ace12 +set  
dedicated 2 +exec codserver.cfg +set sv_punkbuster 1 +map_rotate
```

To go to the "CodServer" screen:

```
screen -x CodServer
```

To exit your screen press <Ctrl>+<A>, then <Ctrl>+<Z>.



*Using Screen for startup is the recommended way to start a Linux COD4 Server. If you choose not to use Screen, please see the following sections for alternative methods.*



*Don't use <Ctrl>+<C> to exit your screen. This will terminate it!*

### 6.5 Startup Shortcut

Create a text file in your mod folder (e.g. cod\_start), and include the following line:

```
./cod4_lnxdded +set ttycon 0 +set fs_game mods/ace12 +set dedicated 2 +exec codserver.cfg  
+set sv_punkbuster 1 +map_rotate >/dev/null 2>&1 &
```



*In the examples, the command line could span two or three lines. This is due to page limitations. All command lines are ONE line.*

*Remember that ace12 is our example mod folder name. Replace ace12 with the name you came up with in step 5.2.*

**Make it executable:**

```
chmod +x <filename>
```

## 6.6 Advanced Startup Shortcut

**You can add several optional parameters to the start file:**

```
+set fs_homepath /home/cod4
```

**Puts the logs and load PunkBuster from this directory.**

```
+sets gamestartup \"date +%D %T\"
```

**Set a date stamp in the log when you start the server.**

```
+set net_ip
```

**Defines the IP address the server binds to.**

```
+set net_port 28960
```

**Defines the port the server listens to.**

**This would create a rather lengthy command line, like this:**

```
./cod4_lnxded +set ttycon 0 +set fs_game mods/ace12 +set fs_homepath /home/cod4 +sets  
gamestartup \"date +%D %T\" +set dedicated 2 +set net_ip 1.2.3.4 +set net_port 28960  
+exec codserver.cfg +set sv_punkbuster 1 +map_rotate >/dev/null 2>&1 &
```



*The IP address 1.2.3.4 should be replaced by the one your server is using. For a LAN server or a public server behind a NAT router, this could be e.g. 10.0.0.1, or 192.168.1.1. For a true public server, use the public IP address.*

*Port 28960 is the default port. If you don't specify it, the server will listen to that port automatically. You can change it if you like.*



*The feature that adds the "Add this server to your favorites" entry to the in-game menu requires that `net_ip` is set. If you don't set it on the command line, the server will be referenced as "localhost", which is not very useful for a link to an external host.*

## 6.7 Stop Shortcut

Create a text file (e.g. `cod_stop`), and include the following lines:

```
#!/bin/csh
#
# 3.1 b - Shell solution
#
set processes = "ace12"
foreach ps ( $processes )
    set pid = `ps aux | grep $ps | cut -c8-15`
    kill -9 $pid
end
```

Next, make it executable:

```
chmod +x <filename>
```

## 6.8 Status Shortcut

Create a text file (e.g. `cod_status`), and include the following line:

```
ps auxw | grep "ace12"
```

Next, make it executable:

```
chmod +x <filename>
```

## 7 Basic Configuration

First things first: to make life easier, you need some file associations. This way you don't have to select a program every time you open a file with an extension unknown to Windows, or associated with a different program.

Associate the configuration files (.CFG) with your favorite text editor. Notepad is a good start, but if you fancy something like Notepad+, UltraEdit or PSPad it's fine. As long as they are true text editors. Associate the IWD files with WinRAR.



*Make notes during the installation process. It's good practice to log all changes made. In case of trouble, this way it's easy to revert back to a working configuration, and it's extremely valuable during upgrades.*

### 7.1 Configuration Files

The master configuration file of ACE is `codserver.cfg`, which can be found in the `mod` folder if you have set up the mod properly. This file holds all global, server specific settings. If you updated ACE from an older version, and never renamed `codserver.cfg`, you don't have to edit your command line.

### 7.2 Basic Server Settings

Open the ACE master configuration file `codserver.cfg` in a text editor.

#### 7.2.1 Public Server Information

This information is published when your server goes live.

```
//*****  
// Public Information  
//*****  
sets sv_hostname "<your_server_name>"  
sets _Admin "<your_admin_name>"  
sets _Email "<your_email_address>"  
sets _Website "<your_web_site>"  
sets _Location "<your_location>"  
sets _Irc "<your_irc_address>"  
sets _Mod "^1ACE"  
sets _ModVer "1.6"  
sets _ModUpdate "xx-xx-xx"  
sets _Maps "COD4 Stock & Custom"  
set scr_motd "Shoot To Kill....Really!!"
```

### 7.2.2 Network Settings

These settings tell to server how to configure network communication. If you have `net_ip` , `net_port` and dedicated on your command line, you can disable them here by commenting them, like in the example below.

```
// Network options
//set net_ip "1.2.3.4"
//set net_port "28960"
set com_hunkMegs "512"
set net_noipx "1"
// Server Network Mode
//set dedicated "2"
```

### 7.2.3 Password Settings

Set the passwords for RCON and private slot access. If you want to set up a private server, set that password too.

```
// Password Settings
set rcon_password "<password>"
" set sv_privatePassword "<password>"
// The following can be used to lock out the server so that only those
// players that have been provided the password can connect. Good for
// matches, practices, etc.
//set g_password ""
```

### 7.2.4 Player Slots

Set the number of players allowed on your server. You can also reserve some private slots. Remember the number of private slots is subtracted from the `sv_maxclients`. So the number of public slots equals `sv_maxclients – sv_privateclients`.

```
// Player slots setup
set sv_maxclients "32"
set sv_privateclients "4"
```

### 7.2.5 Download Redirection

Players have to download the client side part of ACE. By default this is done directly from the CoD4 server. The download speed using this method is about 40KB/s, which is terribly slow. You better set up a download redirect site, which enables downloads at greater speed. Players will appreciate that.

The settings responsible for this are:

```
set sv_allowdownload "0"  
seta sv_wwwDownload "1"  
seta sv_wwwBaseURL "http://yourwebsite/cod4"  
seta sv_wwwDIDisconnected "0"
```

The folder pointed to by `sv_wwwBaseURL` is some folder on your web site. In the example above the base URL points to a folder called `cod4` in the root, but this is completely up to you. This base folder hosts a folder with the same name as the mod folder on your CoD4 server, and a folder called `usermaps`. For the mod folder we use `mods/ace12` in this example, but again this could be named differently in your case.

```
http://yourwebsite/cod4/usermaps  
http://yourwebsite/cod4/mods/ace12
```

The `usermaps` folder is where the custom maps are stored. We advice not to add custom maps before you have ACE up and running without problems.

The `mods/ace12` folder is where you store the latest client side part of ACE.

Always make sure the files on the website are identical to the ones on your game server.



*Every time you add custom maps to the server, or edit the client side part of ACE on the server you HAVE to upload the new files to your redirect site. If you forget this, all clients will end up in a download loop.*

### 7.3 Adding Custom Maps

Custom maps should not be copied into the mod folder. Copy all custom maps into the `usermaps` folder of the server.. IN THEIR OWN SUBDIRECTORY. If you are using download redirection, make sure you also copy the custom maps to the redirect server (see paragraph 7.2.5 for more information).

## 8 Making a Custom Clan Logo

To make your custom clan logo, you need to edit `clan_logo` (in `z_ace1.6.iwd`). You will need to convert this to DDS, so you will need converters to do this. These can be obtained here:

[http://downloads.wildcardonline.nl/cod4\\_converters.zip](http://downloads.wildcardonline.nl/cod4_converters.zip)

You will also need a DDS plugin for your image editor (Photoshop, Paintshop Pro, or GIMP). A PS one can be obtained here:

[http://developer.nvidia.com/object/photoshop\\_dds\\_plugins.html](http://developer.nvidia.com/object/photoshop_dds_plugins.html)

And a Paintshop Pro one here:

[http://downloads.wildcardonline.nl/Paintshop\\_DDS\\_Plugin.zip](http://downloads.wildcardonline.nl/Paintshop_DDS_Plugin.zip)

The next is a part of Tally's tutorial that explains how to replace the `clan_logo` (in `z_ace1.6.iwd`) so it will show your own clan logo. All is written in Tally's words.

### IWI file logo

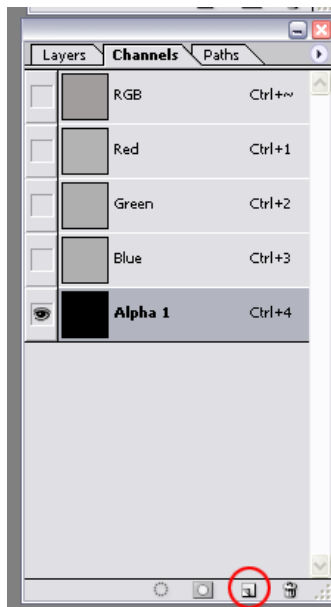
First, create your logo. This is the one I will use as an example. It is one I created for a clan called 'Telford Light Infantry' (TLI):



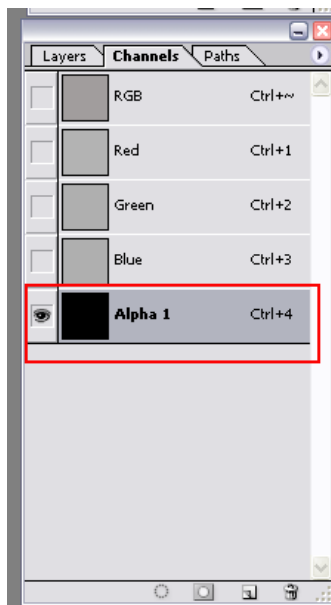
I will be using Photoshop CS for the purposes of this tutorial.

1. Create a new canvas 256x256. Images in COD2 will only work if they are RMS (root means square), or what Chris\_P calls 'to the power of'. Everything therefore has to go up in times the original size: 32, 64, 128, 256, 512, etc.

Fill it with a mid grey with the paint bucket. Then go to layers, and click on the channels tab as marked:



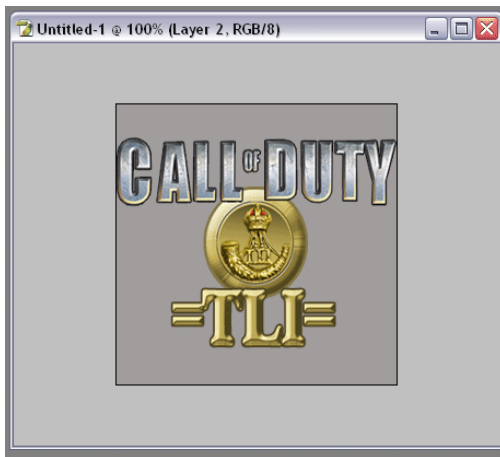
This will create a new alpha channel:



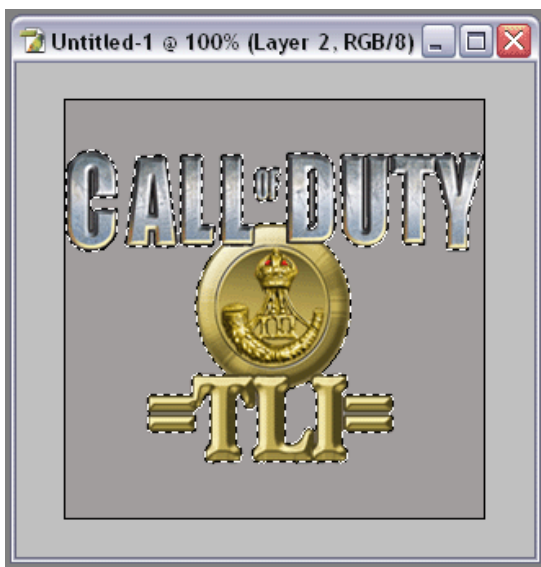
Alpha channels mask off any image, so that they effectively 'don't show' on the server screen. In a moment, we will remove just the area for the logo image, but still mask off the 'square' part of the canvas – the bit we don't want.

2. Now click back on the RGB channel, and switch back to layers by clicking the 'layers' tab.

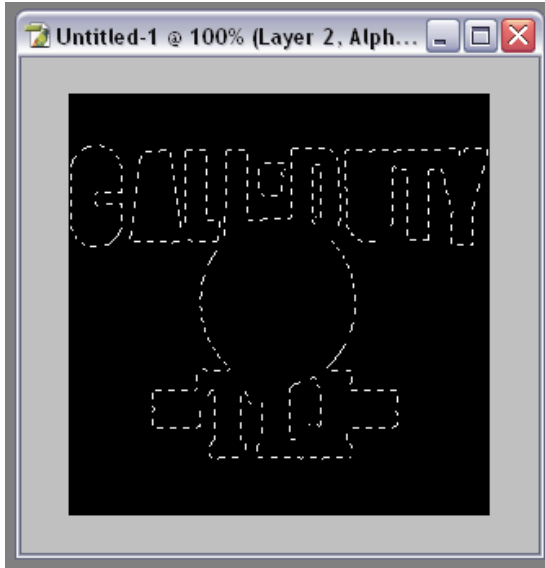
3. Press Ctrl + N to create a new layer. Get your logo image and paste it on the layer. Size it up if you need so that it fits on the area:



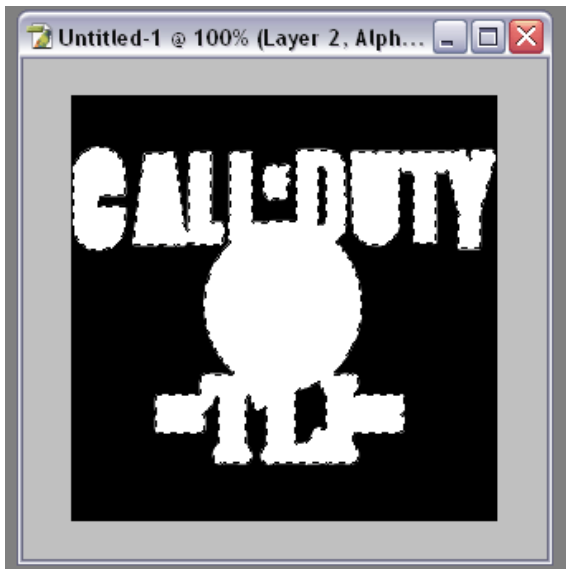
4. Make sure the logo image layer (layer 2) is active. Then get the Magic Wand tool, and select around the image. Then go to Select > Inverse:



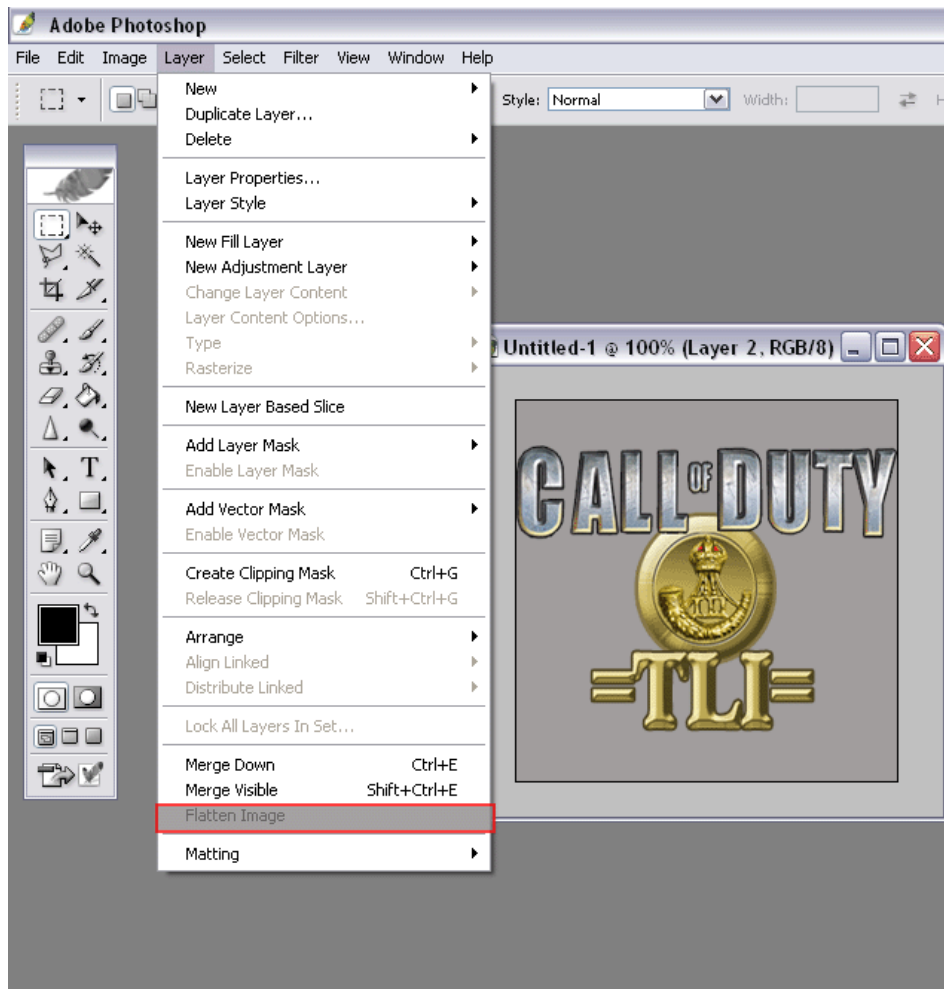
5. Switch back to channels, and click on the alpha channel.
6. You will see that the selection now reveals the logo image in outline form:



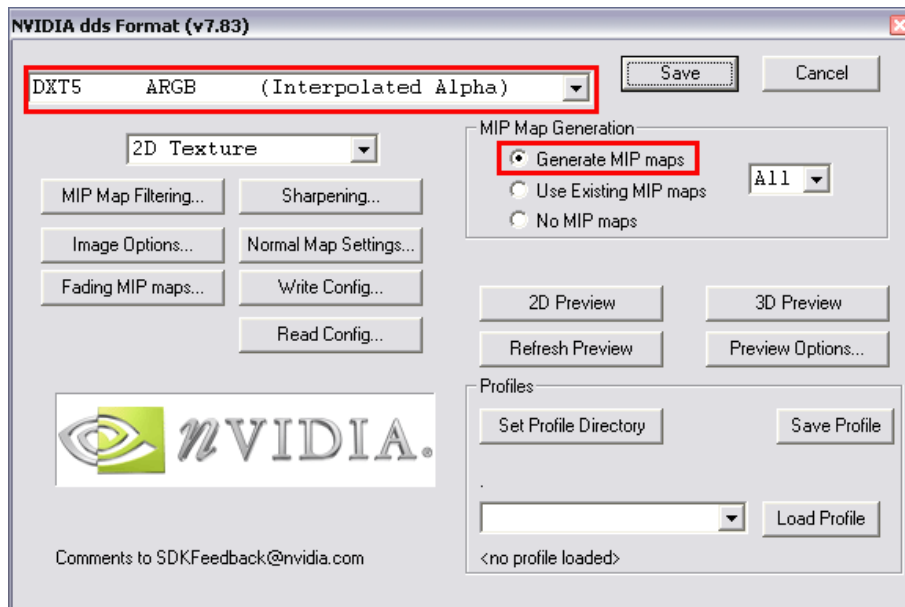
7. Press D, to restore the colour palette to its default Black/White status. Press Delete, and you will remove the mask from the alpha channel. This means that the logo image will show 'through' the alpha mask on the server, but the 'square' part of the canvas wont be seen:



8. Switch back to layers again, and flatten the image:



9. Go to File > Save As, and chose DDS format. Use the default settings on the NVidia plugin, but make sure you set the 2 critical settings – DXT5, and generate (not 'use existing') mipmaps. These are the settings that will make an IWI file valid. Anything else doesn't work:



Save the file as 'clan\_logo.dds'.

10. Copy your new DDS logo file to your desktop, and have the DDS2IWI converter on the desktop too. Drag and drop the DDS file onto the converter, and the newly generated IWI will pop out the other side.

11. Now all you have to do is replace the existing clan\_logo.iwi in the z\_ace1.6.iwd with the one you just created.

You can set the dimensions of the logo with these settings in the cfg file:

```
set ace_clanlogo_width ?? <---- make this what you want
set awe_clanlogo_depth ?? <---- make this what you want
```

The same basically goes for the loading screen scrolling website URL which is called bg\_fogscrollthin.iwi and is located in iw\_00.iwdm in the main directory, edit it to your wishes and replace the one in z\_ace1.6.iwd with yours.

Done.

## 9 Troubleshooting, known and possible issues

By default the cod4 intro screen displays a scrolling text of my website, if you don't want that then delete `bg_fogscrollthin.iwi` from the `iwd` (images folder)..this must be done on both client and server to keep it pure. Or recreate it with your own site or text of course :)

Some vid cards MIGHT experience an error about the `logo_cod2.iwi` , if so you can delete this `.iwi` at the same way as described above.

camping punishment marked on compass is not compatible with bots, they stay marked unless killed (normal players aren't affected).

Also you can not callvote through the ingame callvote gametype/map option for a custom gametype, this is a limitation of the cod4 engine.

Linux servers only:

Linux servers WIL NOT STARTUP with one of the custom gametypes, admin should manually rotate the gametype to a custom one.

## A Version History

### 1.6:

Added sniperdm spawns dvar, if used they will replace the war spawns on wargametype to prevent mixing up allied and axis spawns.  
Brought back the firstblood sound disable/enable dvar...many requested this  
Added dvar to separately disable/enable the headshot sounds  
Updated CTF and CTFB  
Added free spectate dvar, if enabled one can fly freely around the map also up and down, normally one only could float around on one level....only allowed if one is spectating..not when dead.  
Added mp\_village, mp\_village\_night and mp\_offices\_v2 to CTF, CTFB and HTF  
Added a workaround for a few maps that showed a red beam across the screen due to missing models.

### 1.5:

Additional upgrades:  
Got rid of the XP bar since its pointless if were not ranking up on modded servers  
Added missing htf gametype settings in gametypes.cfg  
Custom maps are now not forced to nightmode anymore  
Fixed soundalias error spam in console for mp\_crash\_snow  
Added dvar to enable/disable the bodysearch hint icon  
Added dvar to set the body search time  
Added menu button to add the server your playing on to your favourites  
Added custom map mp\_subway to the modstrings and nightmod  
Added custom map mp\_subway to the ambientfx controls  
Custom map mp\_subway is now compatible with ctf,ctfb and htf  
Added 5 mapvoting system

Added custom gametypes CTF, CTFB and HTF  
Added body search  
Added antilag dvar  
Added dvar to let claymores stay after death  
Added dvar to enable/disable claymore friend icon

### 1.4b:

Replaced black box medikit with a much better one thanks to Tally  
Fixed spawnprotection timer element position  
Fixed nightmode on mp\_farm (was always on regardless day or night setting if nightmod was turned on)

Fixed several fps 25/30 issues such as dropping bombs not showing, teamkill, tickertaps, spawn delay and more  
Added ambient fx control  
Added dvar to disable spawnprotect messages  
Added dvar to use a preset amount of kills instead of killstreak for WMD  
Added dvar to globally disable clan txt logo  
Added dvar to disable mod-info (txt logo fades)..this will disable my info but still shows your clantxt  
Added clanlogo hud image  
Added pain and death sounds  
Added extended obits, 8 choices total (car explosion, helicopter deaths will not show if option 5 to 8 is used)  
- killstreak messages and sounds included (5-8)  
Several script cleanups

#### 1.4:

Added tickertap system to a bunch of custom messages  
Added custom maprotation  
Added rotate map if empty server system  
Added unknown soldier/ unnamed player handling  
Added name checker  
Added nade drop  
Added uav, airstrike, chopper killstreak control  
Added Zero's Nightmod  
Added bodysink (stay, delete, sink)  
Added option to show some by stock disabled messages in Hardcore mode  
Added dvar to delete the dropped healthpacks after a set time  
Changed custom hud elements in hardcore mode (position)  
Fixed display of some custom hud elements while in menu (didn't go away)  
Fixed display of some custom hud elements when changing resolution  
Minor tweaks and cleanups

#### 1.3b:

Redone server messages system  
- Not limited to 10 messages anymore  
- Option to show next map and gametype as a first message  
- Option to control the speed between 2 messages (helpful for long messages you can cut them off and set them as a next message but will be shown immediately after the first half..or any time specified) this is separate from the general delay between messages.

Added admin punishment system (more options to this will be added)  
Fixed first welcome message....it now shows the players name correctly after the first message  
Added music\_enable dvar (the stock scr\_enable\_music one didnt seem to work outside hardcore)  
- This will disable/enable joining, ending, victory, defeat, suspense music

Added obituary dvar to disable/enable stock obituaries (stock one didnt seem to do anything)  
Added claymore dvar (you can now also set if it triggers on the team/player that placed it)

### 1.3:

Kick Player menu disabled, admins can do this always manually, you can contact me if you do want this feature enabled..ill do one special for you :)  
Added drop wep on lower arm/hand hit  
Added trip on lower leg/foot hit  
Added option to expand endmap scoreboard visibility time  
Added Firstblood announcements  
Added Headshot announcement (sounds only) snipers get a diff sound on headshot.  
Added clan txt logo  
Added anti camping  
Added medi kit drop/pickup (lacking good models tho..medikit is black box)  
Changed compassing\_enemyfiring, a compassblip when an enemy is firing is no longer shown  
Various little feature upgrades

### 1.2:

Additional 1.2 updates:  
Redone spawnprotection  
Added ability to disable showing who carries the bomb in SAB  
Fixed crash when using healthregen, forgot to change a dvarname  
Added ability for linux server to see who is connecting and/or leaving (islinuxserver 0/1)  
Added messages which team the player joined  
  
Added bleeddelay override  
Added possibility to selfheal or teammates only (or none)  
Added option to show injured players on compass  
Added option to disable (self)healing for x seconds when hitting a teammate  
Added option to give a scorepoint to a player and/or team for healing a teammate  
Added/updated several firstaid related messages

**1.1:**

Added bostscript for testing purposes

Added Firstaidsystem, this replaces the 1 time selfheal

Added playerbleeding, players bleed a preset amount or bleed out (death)

Added option to use sv\_fps 20, 25, 30

Added weapon damage modifiers

Added option to disable red crosshairs (remain white now)

Healthregen update

Option to disable teambalance msgs

**1.0:**

Initial release

## B Credits

Development of ACE  
Wildcard aka Marc.

Additional credits: Ravir (original cvardef function), PatmanSan for the excellent pdf from extreme I took as example.

---

Original FPS-fix and ambient fx disable method;  
bullet-worm.

Healthregen overhaul;  
Developed by Wanna Ganoush.

Bot script;  
Tally and OLD MAN WITH GUN, enhanced by bullet-worm

Compassping;  
Thanks to Tally for figuring this out.

Laserdot colour images and napalm fx;  
{PST}-Joker.

Nightmod;  
Zeroy.

Bodysearch;  
Original by Bell, adjusted by Myk\_toni and Wildcard.

Health pack model, ctf, ctfb, htf;  
Tally, made compatible for ACE by Wildcard.

The rest;  
Wildcard ( 99% ported over from WW2X).

Suggestions, ideas, feedback and inspiration;  
All the people in the various CoD forums.